



GRISSOM BAND PARENTS ASSOCIATION, INC.

NEWSLETTER

May 2005

Editors: Judy Hardwick and Executive Board, 2004-2005

PRESIDENT'S MESSAGE

Dear Parents,

Wow, it is hard to believe that the school year has come to a close and that our seniors are graduating!!! We've had an amazing year, haven't we?

I want to thank you for allowing me to serve as your President. I have discovered that not only are the kids great, but the parents are also very supportive. Every time I called on one or all of you to help, your willingness amazed me. This year was a trying year due to budget constraints, but we made it!

I would like to offer a special thank you to the outgoing board members. You gave many, many hours to making our program a top-notch band program. Serving on the board requires a great sacrifice, and your efforts made our band program superb!! Thanks a lot, Doris, Greg, Julie, Karen and Kathy. You made my job easy!!!!

Thanks to the committee chairs for their service to the band the past year (and many years, for several of you). The band program does not run on its own. These folks worked hard behind the scenes to ensure that all the band activities were successful. Please thank the committee chairs and their volunteers when you see them. They have pulled off some amazing feats, because, I promise you, things don't always run as smooth as they appear to be at the performance. I have personally seen these chairpersons and their helpers perform miracles!

Please read the newsletter and mark the important dates on your calendar. Next year is shaping up to be a great year. The directors and students are excited about the marching program, and rookie camp is just around the corner. Continue to check our website for information (www.grissomband.org).

Thanks again for the opportunity to serve on the board. Please continue to support our new board members and committee chairs and the band will continue in its fine tradition!

Cherry Hovik
President

Cherry Hovik, President
882-6190; cjhovik@comcast.net

Greg Harris, 1st Vice President
880-7564; harris4au@knology.net

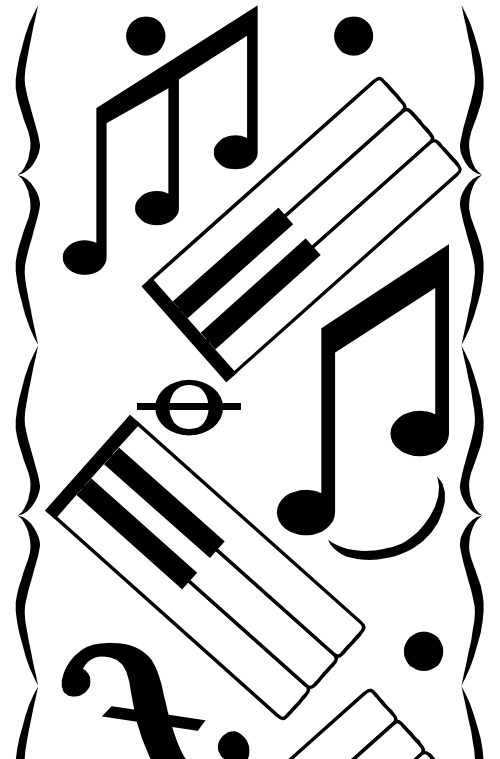
Karen Parker, 2nd Vice President
883-4622; parker23@knology.net

Doris Lewis, Secretary
881-3154; dslewis@knology.net

Julie Ashcraft, Treasurer
650-5043; Julie23@ashcraft.net

Kathy Francica, Treasurer
883-7132; KFrancica@bellsouth.net

Bill Connell and Theo Vernon, Directors
881-1075 (band room)



Director's Info

Another successful year down and we have already begun the next with a bang! Color Guard auditions have taken place. A percussion clinic has already taken place and Rookie-Camp is coming up. When most school teachers are winding down and closing their book, the band directors and band students are gearing up for another year. We never have down time but that is what makes our program successful.

The theme for this year's show is "EMOTIONS" arranged by Mr. Ed Gaston of Walt Disney World. All music selections will convey a different emotion (love, anger, fear, sad, happy). We are excited about the possibilities for this year's theme! Our drill will again be designed by Mr. Dale Warren from The University of Arkansas. Mr. Bryan Barley and Sean Womack will be our percussion instructors and Mr. Stan Gillispie and Courtney Doering will be our color guard instructors. We look forward to working with all of these fine talented people to help us put together a wonderful show for the fall.

As many of you already know we **WILL** be sponsoring a marching contest this fall on October 22 at Milton Frank Stadium. We want to make this a truly positive experience for all participants including us, the Grissom Band Family. We will also participate in two marching contests this fall. The first one will be September 24th and the second one October 8th back to Lassiter HS Contest in Marietta, GA (This will be an overnight trip with a small fee for the hotel). These performances are required for all marching band members and are fabulous opportunities for fun and adventure.

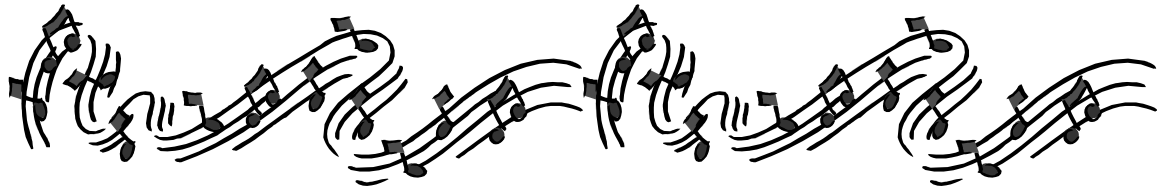
Please refer to the band website for all upcoming band events. We have included in this newsletter information for all New Grissom Band members. It would be a good idea for everyone to review this information because it applies to you too.

Percussionists and color guard have rehearsals throughout the summer that are required. Please refer to the dates listed in this newsletter and on the website and make arrangements to be here. These rehearsals are very important to the quality of these two sections. We have hired instructors that will be here to work with you so any time you miss you could be chosen as an **alternate** and/or will be **VERY** behind and it is very difficult to catch up when you miss a rehearsal.

The marching music will be posted on the website prior to Pre-Camp for you to download and practice. All of the stand music is already posted so you can begin learning it too. You will need the following to access the music. Username: student and Password: *bandontherun*. Please download this and print out your parts. **We ask that each playing member of the band, with the exception of the pit percussion, have a flip folder by Pre-Camp to hold all music for the fall.**

Be sure you all get out over the summer and have a lot of fun but also **PLEASE GET SOME EXERCISE**. Marching Band is a physical activity. It will be hot so we will have to deal with it just like all the other superior bands. The better shape you are in, the better the band will be. Everyone needs to keep their "chops" in shape too so **PRACTICE** your instrument. **Show music memorization will begin at Band Camp this year not in September.**

All students, whether returning or new, are required to have a notarized medical form on file to be able to participate in band activities. All veterans must fill out a new form each year! Please take care of this prior to July 28th. A form is included in this newsletter or you can download a form from the website at: <http://www.hsv.k12.al.us/dept/forms/Outoftown.doc>



SUMMER REHEARSALS

Percussion Weekly Clinics	Thursdays beginning	June 2-July 28	6-9pm
Percussion Weekend Clinic	Thursday, Friday, Sat.	June 24-26	24 th -6-9pm/25 th -5-9pm/26 th -2-7pm
Color Guard Camp	All guard members	June 6-10	8-11am/12-3pm
Color Guard Camp	All guard members	July 4-8	8-11am/12-3pm
Percussion Camp	All percussion members	July 18-22	8 - 12 and 1- 5PM
Color Guard Camp	Sabres/Rifles	July 26-29	8-11am/12-3pm
Band Pre-Camp	ALL BAND MEMBERS	July 27-29	8am-12pm
Band Camp	ALL BAND MEMBERS	Aug. 1-5	8-12/1:30-4:00/6-9pm
Kick-Off/Cook-Out	ALL BAND FAMILIES	Aug 5 th	6pm (GHS parking lot)

BAND CALENDAR 2005-2006

Please refer to the web site for the 2005-2006 Band Calendar of events, which includes rehearsals, football games, competitions, concerts, trips, etc. All of the events posted are required attendance for all members. We will hand out copies of this schedule during band camp and when school starts.

Grissom Band Member Information

Listed below are important dates and reminders for all Grissom Band Members. If you ever have any questions, please call the band room at 881-1075 or email the band directors:

Mr. Connell lennoc1@aol.com or Mr. Vernon jtvjazz@knology.net

***Grissom Band Website**, a plethora of information. Check it often! www.grissomband.org

***Grissom Band Handbook** posted soon on the website for downloading. Revisions are being made this summer. **Please read this handbook.** It will answer many of your questions about the Grissom Band Program.

***Summer dates.** Please check the website for all band activities throughout the summer. These are very important rehearsals that will put you behind if you miss.

***Band Fees and uniform fittings.** Band fees are \$500.00.

The \$300.00 CASH PORTION of your student's fees is due at uniform fitting the week of July 25-29. You are encouraged to make smaller payments in each summer month. For example, you may pay \$100 in June, \$100 in July, with the final payment of \$100 made at the time of uniform fitting.

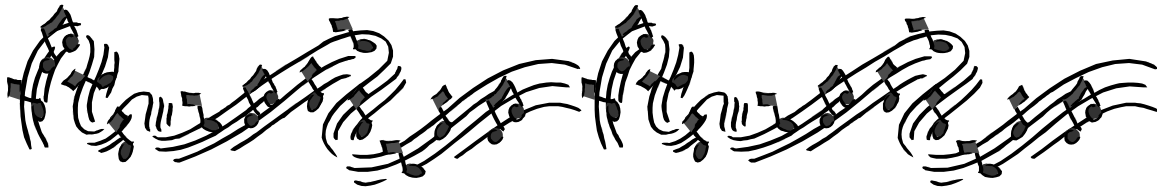
The "CASH OR EQUIVALENT CREDITS" portion of the fees (\$200) can either be paid with cash **OR** it can be paid by credit earned by working at **certain eligible** fundraisers (i.e., fruit sales, VIPERS, flower sale, rummage sale) or by buying scrip. \$100.00 is due November 1st and the final \$100.00 is due March 31st.

Because a majority of the band's expenses are incurred during marching season, prompt payment of your fees is crucial to the band program! A 20% penalty will be applied to the unpaid fees if not received by September 1st. Students who are exempt from school fees based on their family income are exempt from all band fees. Payments can be mailed or placed in the treasurer's box in the band room. Check only -- **NO CASH.**

Grissom Band Parents Association
P. O. Box 4335
Huntsville, AL 35815

***Car Washes.** Each section will have a couple of car wash fundraisers for our Max Hammond Instrument account. These are held at Advance Auto on South Parkway on Saturdays throughout the summer. The schedule is posted on the website and section leaders will be calling you to remind you about your weekend. We must have a parent from each section be there during their section's car wash to handle all money and get it to our treasurers.

***Sock Sales** The band has just completed a success sale of GHS socks. The band will continue sales of our socks this spring with the upcoming 9th graders (during rookie camp) and this fall with the entire band as a way to help pay band fees. We have an exclusive agreement with a hosiery mill in Ft. Payne that will custom make socks for the band in any style we request. As a reward for our business, the hosiery mill will custom make socks for every band student to wear with their uniform. These socks will be available in the fall.



***Percussion/Color Guard** summer rehearsals. Please refer to the calendar posted on the website and in the newsletter for all summer rehearsal dates. These are very important in the development of these sections which require many hours of preparation prior to our Pre-Camp and Band Camp.

***Section Get-togethers.** During the summer your section leaders will have a couple of get-togethers so everyone can get to know each other prior to Pre-Camp in July. These will be fun activities and we encourage you all to attend.

***DCI show at MTSU.** We are planning a trip to a Drum Corp Show at Middle Tennessee State University on Friday, July 29th after Freshmen orientation which begins at 1:00pm at Grissom. We will plan on leaving around 3:00pm and return after midnight. The cost of a ticket will be \$15.00 plus transportation costs of approx. \$15.00. Your section leaders will take your reservation and the

deadline to register is July 1st. We cannot guarantee your ticket will be seated with the rest of the group if your order after **JULY 1st.**

***Summer band uniform** for the first few football games. Each band member is required to have a pair of Khaki shorts and **WHITE** tennis shoes to wear along with the band T-shirt for the first few football games. We prefer a knee length (or as close to that as possible) Khaki pant for everyone.

***WHITE TENNIS SHOES.** We ask that each member of the marching band wear a pair of **WHITE** tennis shoes to all marching band rehearsals. These do not have to be \$200.00 shoes. Please make sure the color of the shoe is majority **WHITE**. This helps the directors fix many foot problems during the season when they all are close to the same color. Thank you!

***Instrument Rental.** If you are playing a Grissom Band owned instrument, you will pay a per semester rental fee of \$45.00 for summer, fall and spring. The following instruments have a rental fee: Sousaphones/Tubas, all percussionists, Mellophone (marching French Horn), Concert/Marching Baritones, Bass Clarinets, Baritone Saxophone, Tenor Saxophone (as available), piccolos (as available) and Bassoons.

***Marching Band music.** All of the stand music for the marching band is posted on the band's website under Show Music. To access it you must have the username: student and password: *bandontherun*. Get a head start on this music by downloading it and practicing it. There are even some sound files that you can listen to. Parts will be divided up at Pre-Camp. Once we get all of the show music arranged, we will post it as well. All files will be in PDF format. Adobe Acrobat Reader files. Our theme for the show is "EMOTIONS" with music arranged by Ed Gaston.

***Uniform Fitting.** The week of July 25-29. Each class will be assigned a specific night for fittings. Please refer to your July newsletter for specifics. All new marchers will be required to order a pair of black marching shoes from the band at approx. \$30.00. Any veteran marchers who need new shoes will order at this time also. Black gloves will be sold prior to the first performance in uniform.

***Pre-Camp and Band Camp.** These rehearsals are required for all marching band members and are part of your grade for the first

nine weeks of school. Pre-Camp for all marching band members is July 27-29 from 8am-12pm. Marching fundamentals and music will be practiced. Band-Camp is August 1-5 with three sessions. 1. 8:00am-12:00pm (outside learning the show) 2. 1:30-4:00pm (inside working on music and equipment work) 3. 6:00-9:00pm (outside working on show). We get so much done during these camps and have a great time doing it!

***Rehearsal Attendance.** Attendance at all scheduled rehearsals (full band and sectionals) and performances is required of all members of the band program. Unexcused absences or frequent tardiness will lower your grade and hinder you from performing. It is your responsibility to notify the band director in advance (**at least 2 weeks**) with a signed note from your parent if you will miss a rehearsal. You must make up all missed rehearsals (excused or unexcused) by staying after school, making up the lost time, and passing off music with the director. Failure to do so within one week will result in your grade being lowered 10 pts. per missed rehearsal during that 9-week period. We request that **2 weeks prior** to a performance no rehearsal is to be missed; no excuses except family emergencies. The student will not be allowed to perform with the band and as a result they will receive a failing grade for that 9 weeks. This is why we hand out activity calendars at the beginning of each school year and post on the web site in late June or early July.

ABSENCES

Excused absences included the following reasons: (Must be made up within one week)

1. Sickness – must have signed note from parent/guardian
2. death in the family
3. pre-arranged conflict -- must be cleared in advance (**at least 2 weeks**)
4. Emergency doctor's appointment

Unexcused absences include the following reasons: (Cannot be made up)

- | | |
|-----------------------------------------------------------------------------------------------------------------------------------------------------------------------------------------------------------------------------------------------------------------|-------------------------------------------------------------------------------------------------------------------------------------------------------------------------------------------------------------------------------------------------------------------------------------------------------------------------|
| <ol style="list-style-type: none"> 1. Skipping 2. forgetting 3. employment conflict 4. babysitting 5. birthday 6. club meeting 7. make-up test that could be scheduled at a different time | <ol style="list-style-type: none"> 8. doctor and other appointments that could be scheduled at a different time 9. trip made in disregard of band commitment 10. any other conflict not cleared in advance with the band director 11. any conflict that is not school related |
|-----------------------------------------------------------------------------------------------------------------------------------------------------------------------------------------------------------------------------------------------------------------|-------------------------------------------------------------------------------------------------------------------------------------------------------------------------------------------------------------------------------------------------------------------------------------------------------------------------|



\$\$\$ TREASURER'S BOX \$\$\$

Band fees remain *unchanged again* for the 2005-2006 school year.

We encourage ALL PARENTS to begin making payments on the 2005-2006 Band Dues IMMEDIATELY. It is frequently easier and less painful to make a few smaller payments over the summer and be done with it than to be hit with that one big bill at the end of July. You may choose to make a lump sum payment or spread payments out over the summer months. The **CASH PORTION** must be paid *in full* by the day of your child's uniform fitting – July 27-28.

BAND FEES FOR THE 2005 – 2006 SCHOOL YEAR

	CASH PORTION	CASH OR EARNED CREDITS	TOTAL BAND DUES
MARCHING	\$300.	\$200.	\$500.
Concert only	\$245.	\$200.	\$445.
Guard only	\$270.	\$100.	\$370.
Jazz only	\$150.	0	\$150.

TO SUMMARIZE:

If your student marches, total band dues are \$500. \$300 must be paid by July 28, 2005. With the remaining \$200, you have the option to pay in cash or pay with earned credits. Half of this amount is due in December, half in March.

Because a majority of the band's expenses are incurred during marching season, prompt payment of dues is crucial to the band program! A 20% penalty will be applied to the unpaid fees if not received September 1st.

If your student rents an instrument from the band or uses the band's equipment as part of the pit or percussion section, you will pay a rental fee of \$45 per semester. A summer rental fee of \$45 is

also charged to percussion students and to those who use a band instrument over the summer. Rental fees may be mailed to the post office box or dropped in the Treasurer's Box at school, as are all payments.

*****PARENTS** – Please plan to accompany your student to Uniform Fitting night, **July 27-28**. There will be mandatory paperwork that only you can fill out and sign.

Scrip is an excellent way to earn credit to pay that "CASH OR EQUIVALENT CREDITS" portion. We all spend hundreds of dollars at the grocery store. Those credits really add up fast. (Call Karen Parker for details.) Credits for scrip will continue to be posted to your account throughout the summer.

All checks are to be made out to **Grissom Band Parents Association – or GBPA**.

Mail them to:

Grissom Band Parents Assoc.

P.O. Box 4335

Huntsville, Al 35815

Julie Ashcraft and Kathy Francica will be retiring as your treasurers as of June 1st. Your new treasurers will be **Mary Setzer** and **Teresa Montgomery**. Inquiries about your account and money matters in general can be directed to Julie until June, and then should be directed to Mary or Teresa, who will be happy and excited to help you!

Have a joyful summer, and begin making those payments soon!

Julie Ashcraft

650-5043

Julie23@Ashcraft.net

Kathy Francica

883-7132

KFrancica@bellsouth.net

Mary Setzer

880-2862

TubaJrsMom@hotmail.com

Teresa Montgomery

881-9387

tdmont@hiwaay.net

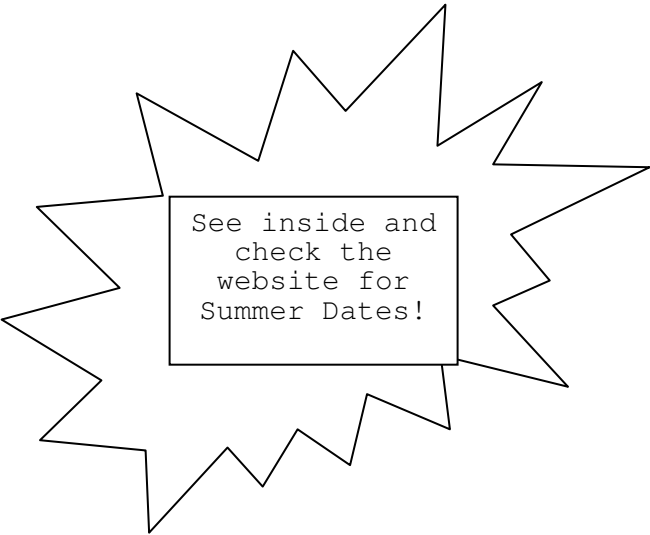


Music washes away from the soul the dust of everyday life.

Berthold Auerbach

GRISSOM HIGH SCHOOL
GRISSOM BAND PARENTS ASSOCIATION
PO BOX 4335
HUNTSVILLE, AL 35815

NON-PROFIT ORGANIZATION
US POSTAGE PAID
HUNTSVILLE ALABAMA
PERMIT NO. 495



See inside and
check the
website for
Summer Dates!



GHS TIGER BAND MAY NEWSLETTER